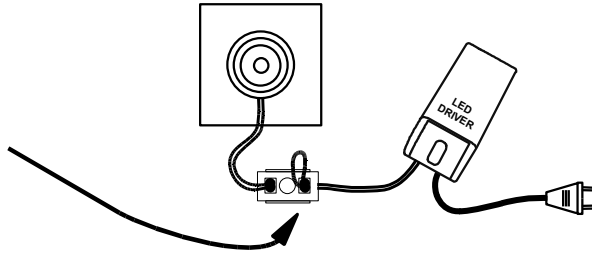


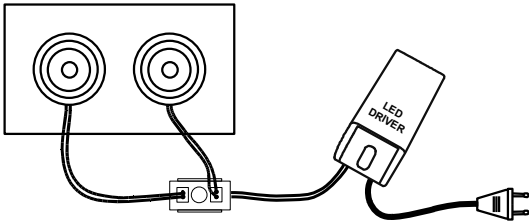
**Always disconnect the mains of the driver before plugging or unplugging the LEDs.**  
 Failure to do so will damage or destroy the LEDs because of the high voltage present on the driver output when there is no load connected.

### L053000S1

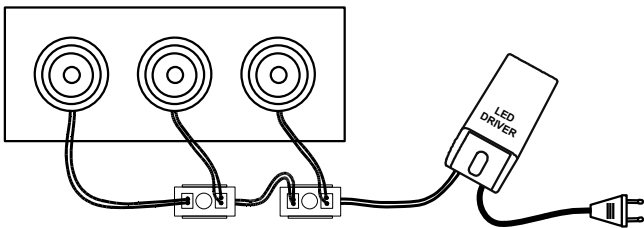
**Short Circuit Plug:**  
 The LEDs are always connected in series, so you will need to close the circuit with an extra plug when you connect only one LED.



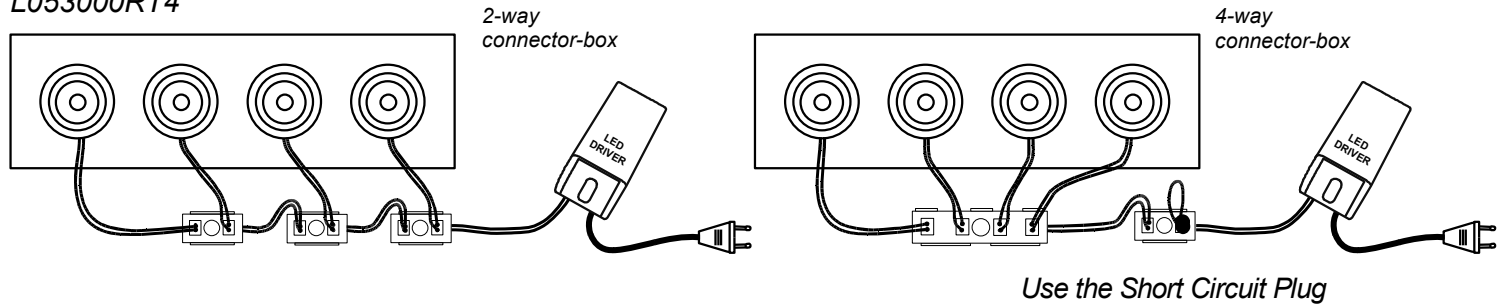
### L053000RT2



### L053000RT3



### L053000RT4



### L053000RT5

